



UZ
LEUVEN



Algorithms for the appropriate choice of the venous access devices: An online tool to guide you to the first choice vascular access for YOUR patient

9th GAVeCeLT Congress, Milano, 2-3 December 2015

G. A. Goossens, PhD, RN

CNS, Vascular Access Working group

University Hospitals Leuven, Belgium

UZ
Leuven

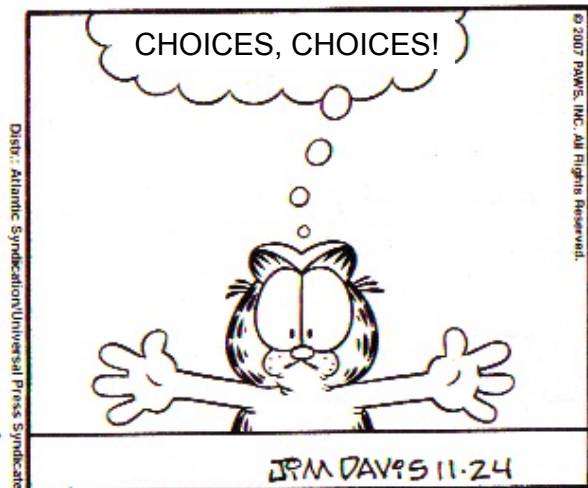
Herestraat 49
B - 3000 Leuven

www.uzleuven.be
tel. +32 16 33 22 11

UNIVERSITY HOSPITALS LEUVEN

Choosing the right catheter: A difficult choice in the vascular access world

GARFIELD



THE CHALLENGE

- University Hospitals Leuven
- 1850 beds



The answer: development of an algorithm and make it electronically available

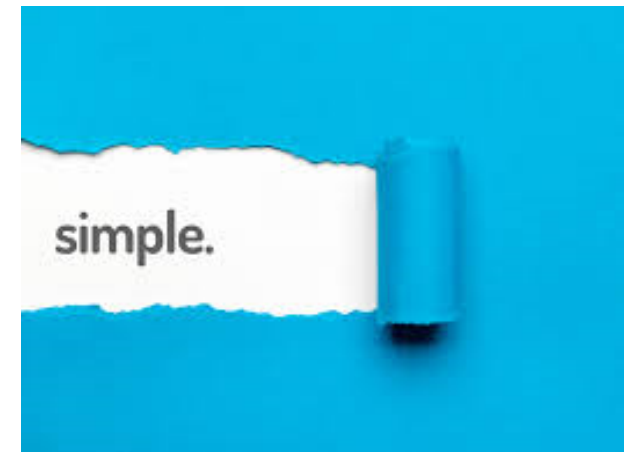
⇒ Make evidence-based knowledge available to all

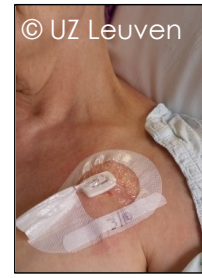
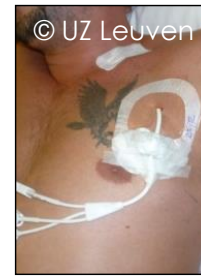
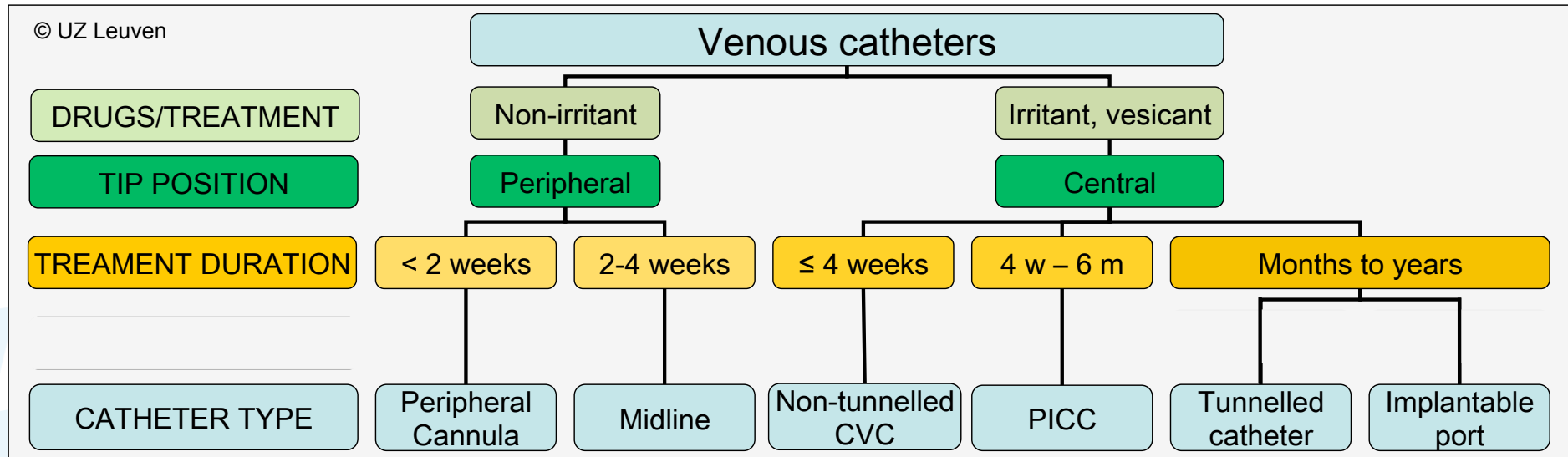
⇒ Multidisciplinary VA team with high expertise in vascular access

VA-choice algorithm:

The simple edition

WHAT? FOR HOW LONG?





VA-choice algorithm:

The advanced edition



WHAT? FOR HOW LONG?

...AND MORE SPECIFIC VEIN &

PATIENT'S FACTORS



Type of Drug?



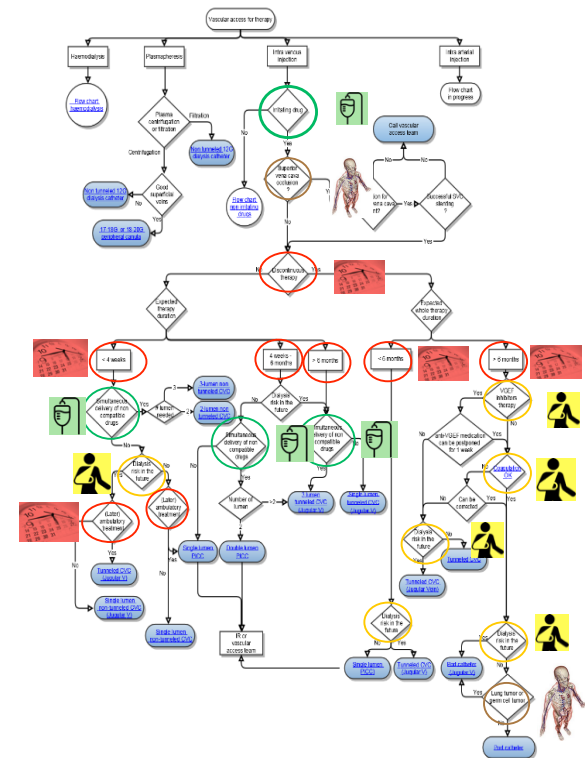
Therapeutic regimen?



Vein assessment?



Other patient specific factors?

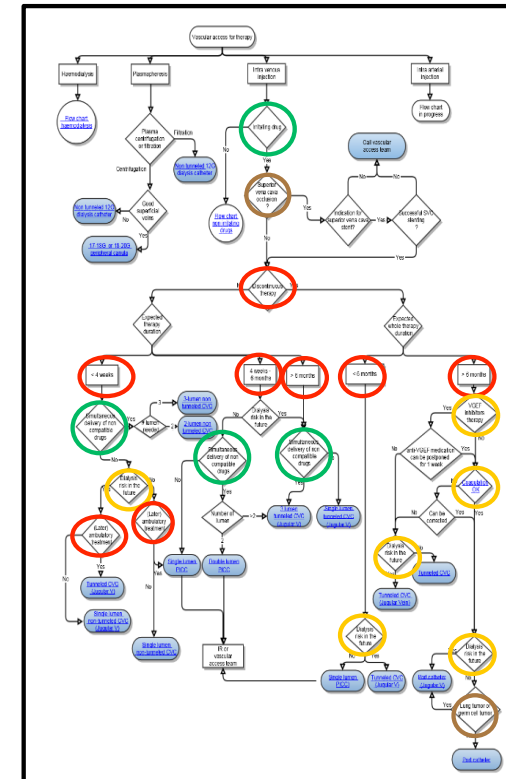




2. THERAPEUTIC REGIMEN

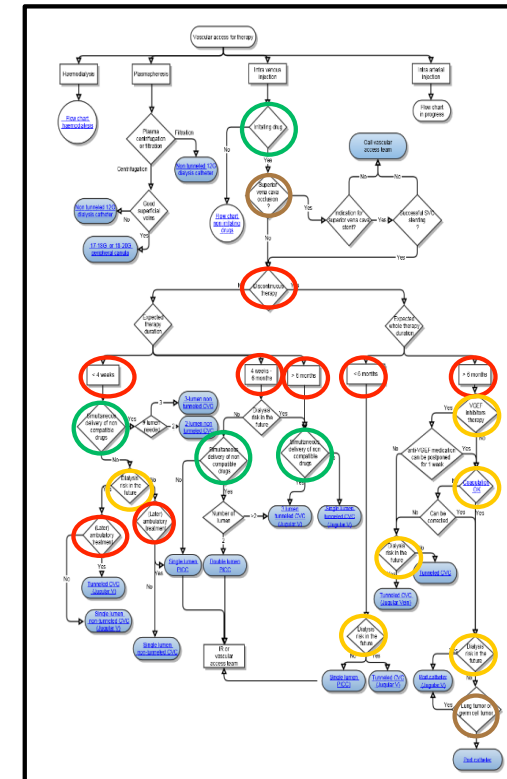


- Days/weeks/months
- Intermittent/continuous
- Home care versus in-hospital



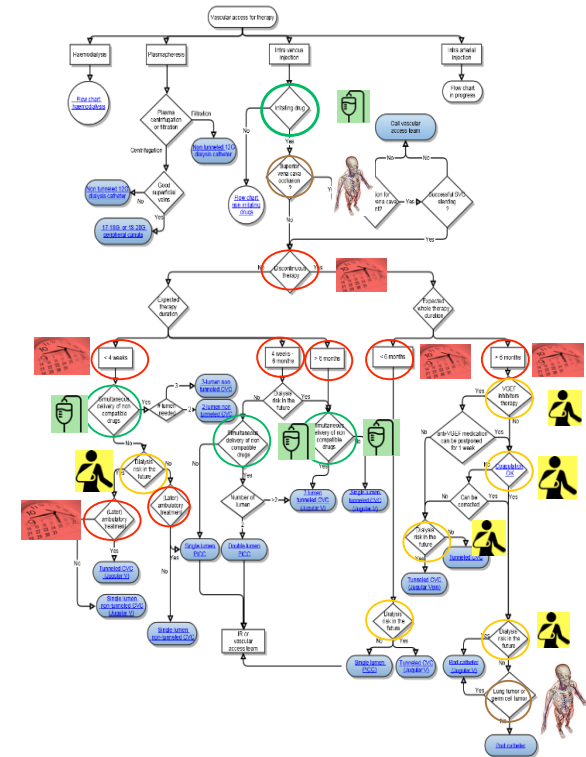


- Peripheral and central vein status
- SVC versus IVC
- History of previous access or venous thrombosis



Development of an electronic version

- Tool has been online since one month
- Bugs have been partially fixed
- Continuous evaluation of content



Example 1: non – irritant drug administration

Vaataccess voor therapeutische doeleinden



Type access


- Hemodialyse
- Plasmaferese
- IV toediening (intra veneus)
- IA toediening (intra arterieel)
- Bloedname

Suggestie



Example 2: chemotherapy administration

Vaataccess voor therapeutische doeleinden



Type access

Hemodialyse
 Plasmaferese
 IV toediening (intra veneus)
 IA toediening (intra arterieel)
 Bloedname

Suggestie



- Vascular access = complex multidisciplinary task
- Flow chart can be useful for patient's assessment and can help to select the appropriate device and vein
- Development of an online available tool can have practical advantages and can be used for teaching purposes
- There is always room for discussion and improvement!
 - Some specifications are not yet included in this chart such as frequent blood sampling, CF, axillary node dissection, limb edema, severe BSI, neutropenia

Nephrology

Kathleen Claes, PhD, MD

Pediatrics

Veerle Cossey, PhD, MD

IRCC

Sam Heye PhD, MD
Geert Maleux PhD, MD

Surgical Oncology

Veerle Boecxstaens PhD, MD
Marguerite Stas PhD, MD

Anesthesiology

Steve Coppens, MD

Grazie
per la
vostra
attenzione

Staff Nurses

Lieve Goosens, PhD, RN
Christel Janssens, MSc, RN
Martine Jérôme, MSc, RN
Els Van Der Mynsbrugge, RN
Lucia Van Roy, RN

Vascular Surgery

Inge Fourneau PhD, MD

Infection control

Paola Melussi, RN

IT

Michel Feron
Christiaan Franz

Vascular Access working group, UH Leuven, Belgium